



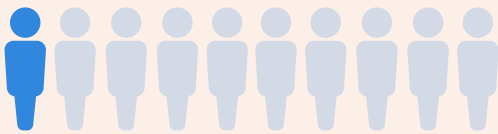
Arthritis Consumer Experts Survey Report on Arthritis and Health Inequities

Arthritis Consumer Experts conducted a 33-question online Survey (Aug 2-19, 2022) in English and French. The Survey was conducted in partnership with Research Co., a public polling firm. Respondents answered questions regarding population characteristics, access to care, interactions with health care providers, unfavourable experiences, and information seeking habits.

Who were the Survey respondents?

- 1,249 respondents
- A quarter of respondents identified as BIPOC and three quarters of respondents identified as white.
- 3 in 5 respondents identified as women, 2 in 5 as men, and 1 in 100 as non-binary. Almost half of the Indigenous respondents identified as Two-spirited.
- 54% of respondents live in large urban centres with population of 100,000 or more
- 46% is a college or university graduate, 23% with some college or university and 18% had high school or equivalent education

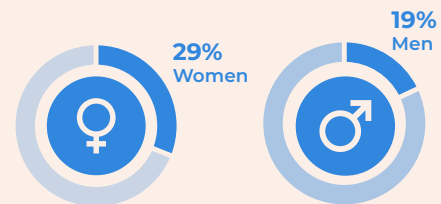
Access to Care



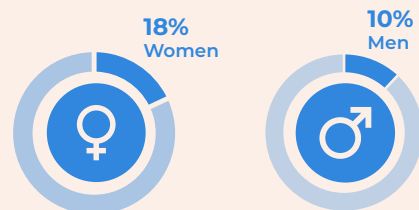
1 in 10 respondents did not have access to a primary care provider

Women reported greater barriers than men including...

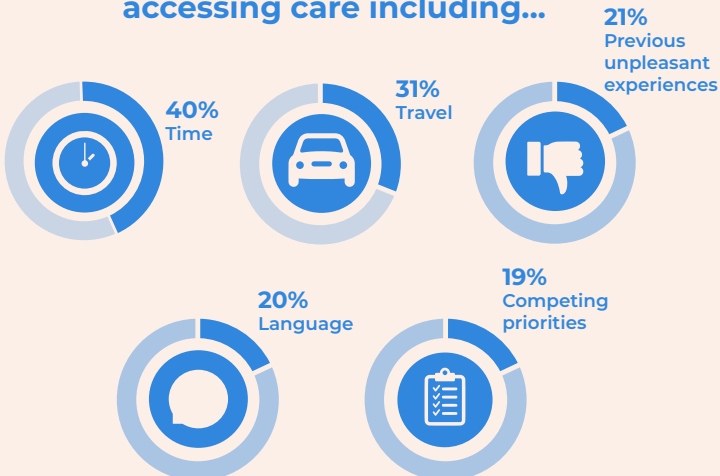
Travel



Previous unpleasant experiences



Compared to white respondents, BIPOC reported greater barriers to accessing care including...



Respondents living in rural areas experienced even greater travel related barriers. Indigenous Peoples who resided in rural communities experience the greatest challenge.

“Geography. I live in a remote community and it makes accessing healthcare difficult.”

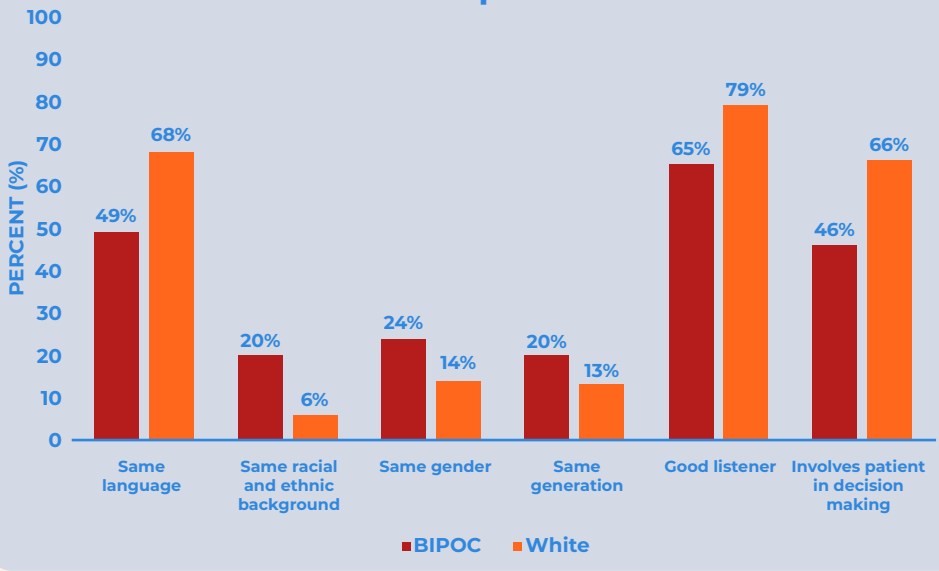
– Indigenous respondent living in a rural community

Interactions with health care providers



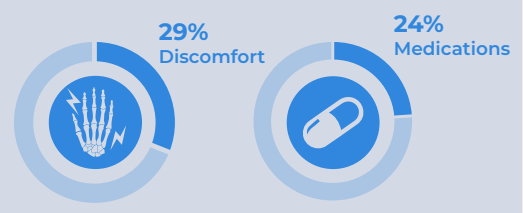
BIPOC respondents reported favoring HCPs with the **same racial background, gender, or generation**. **Good listening skills, involving the patient in decision making and speaking the same language** were also valued by BIPOC respondents, but less by white respondents.

Figure A: What characteristics patients seek in health care providers

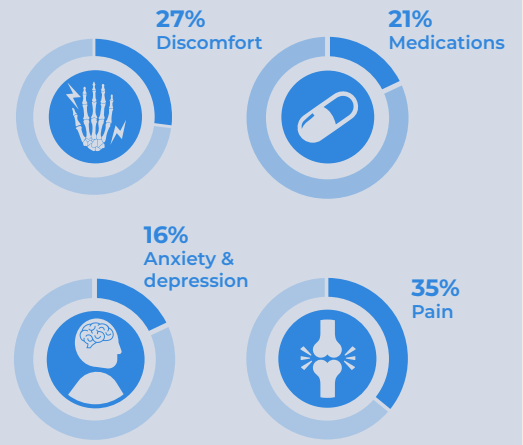


Topics discussed with rheumatologist

BIPOC respondents were less comfortable speaking with their rheumatologist about...

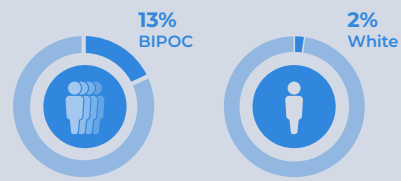


Men were less likely to report being comfortable asking about...

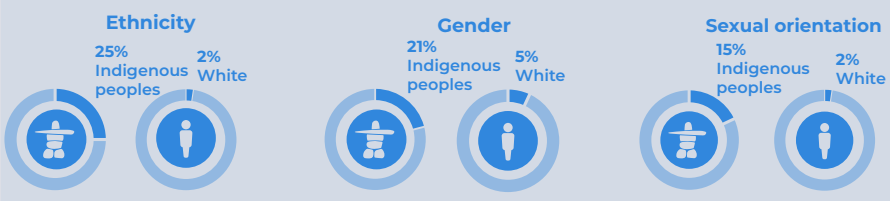


Discrimination

BIPOC respondents were six times as likely to report having experienced ethnicity-based discrimination "often"



Results were even more pronounced for Indigenous Peoples who face discrimination "often" based on...



Key Takeaways

Our findings suggest that BIPOC respondents face significantly greater barriers when accessing arthritis care, and when they do, benefit less from their interactions. ACE's Survey results further reinforce current health literature that calls for training HCPs to create safe spaces, meaningfully address patient concerns and ensure the delivery of equitable care.